

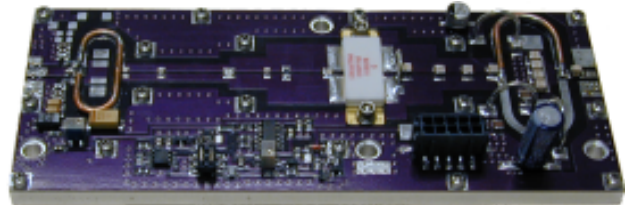


# P50-UHF-12

High Power RF Amplifiers and Accessories

100W UHF 470 - 860 MHz TV Linear Pallet Amplifier

The **P50-UHF-12** is an integrated TV linear amplifier designed for the television integrator in mind. Providing a minimum of 50W pk sync linear power, the P50-UHF-12 is the perfect IPA or output stage for any broadband UHF transmitter. Featuring gold metallized LDMOS technology and multi-stage input and output match, this amplifier offers unparalleled performance.



- No RF assembly or circuit tuning!
- 100 Watts of Pk Sync Output Power!
- Combined **Video and Aural** at full rated power!
- 12dB typical gain at Channel 69!
- Modular Construction for ease of Integration!

## Specifications:

$V_{sup}=+32V_{dc}$ ,  $I_{dg}=1.0A$ , 470-860MHz

Parameter	Min	Typ	Max	Units
Power Out, P1dB	49	52		+dBm
Linear Power Out, Pk Sync <small>Full Field Red, NTSC-NA, IMD = -54dBc</small>	50			Watts
Power Input, Pk Sync		5.0	10.0	Watts
Power Gain	11	12		dB
Drain Current		10		A
Input VSWR		3:1		
Insertion Phase Variation <small>(unit to unit)</small>		±5		°
Power Gain Variation <small>(unit to unit)</small>		±1		dB
F2 Second Harmonic		-20		dBc
F3 Second Harmonic		-35		dBc
Baseplate Operating Temp	-0		+70	°C
Physical Dimensions	6.0" x 2.4" x 1.0" / 15cm x 6cm x 3cm			

## Absolute Maximum Ratings:

Parameter	Value	Units
Maximum Operating Voltage	+34.0	V DC
Stable Operating Voltage	+28.0 to +32.0	V DC
Maximum Bias Current <small>Factory set to 1.00A.</small>	3.0	A
Maximum Input Power	41.0	+dBm
Maximum Drain Current, Total	10.0	A
Load Mismatch Survival <small>At all phase angles with the base plate held at 40C and Id current limited to 11A, 2 seconds maximum</small>	3:1	
Storage Temperature	-40 to +105	°C
Maximum Operating Baseplate Temperature	+70	°C

## Features Include:

- Temperature Compensated Bias
- Temperature Controller- Analog Temp Output
- High Temp alarm with automatic PA disable
- High Temp alarm output
- Amplifier Disable
- Current Sense
- Connectorized Power and I/O

web <http://www.drft.com> • email : [sales@drft.com](mailto:sales@drft.com) • 1.775.DELTA RF • FAX 1.775.DELTA FX

**Delta RF Technology, Inc. • 801 East Glendale Ave • Sparks • NV • 89431 • U S A**

The specifications contained herein are subject to change without notice. Delta RF Technology, Inc. assumes no liability for the use of this information.

© Delta RF Technology, Inc., 2004. Rev 1.b 03/04

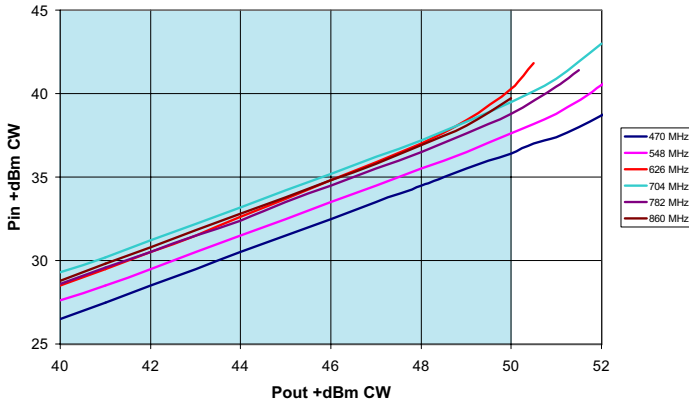


# P50-UHF-12

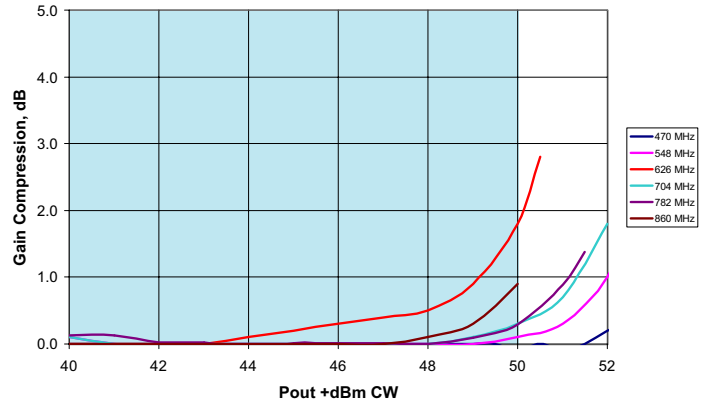
High Power RF Amplifiers and Accessories

100W UHF 470 - 860 MHz TV Linear Pallet Amplifier

Pin vs. Pout

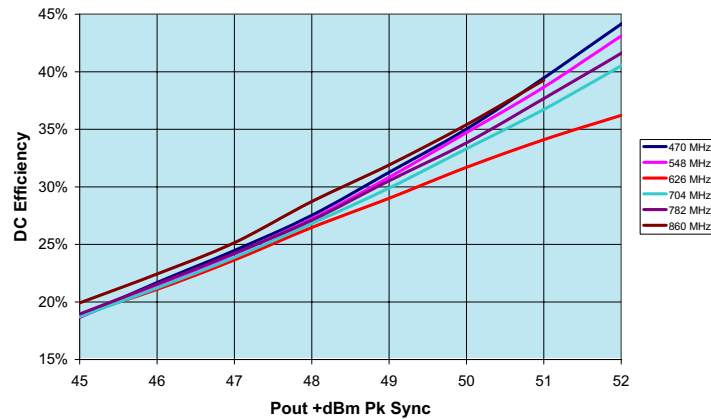


Gain Compression



Shaded areas denote recommended operating power conditions

Efficiency, Super Lumina Black

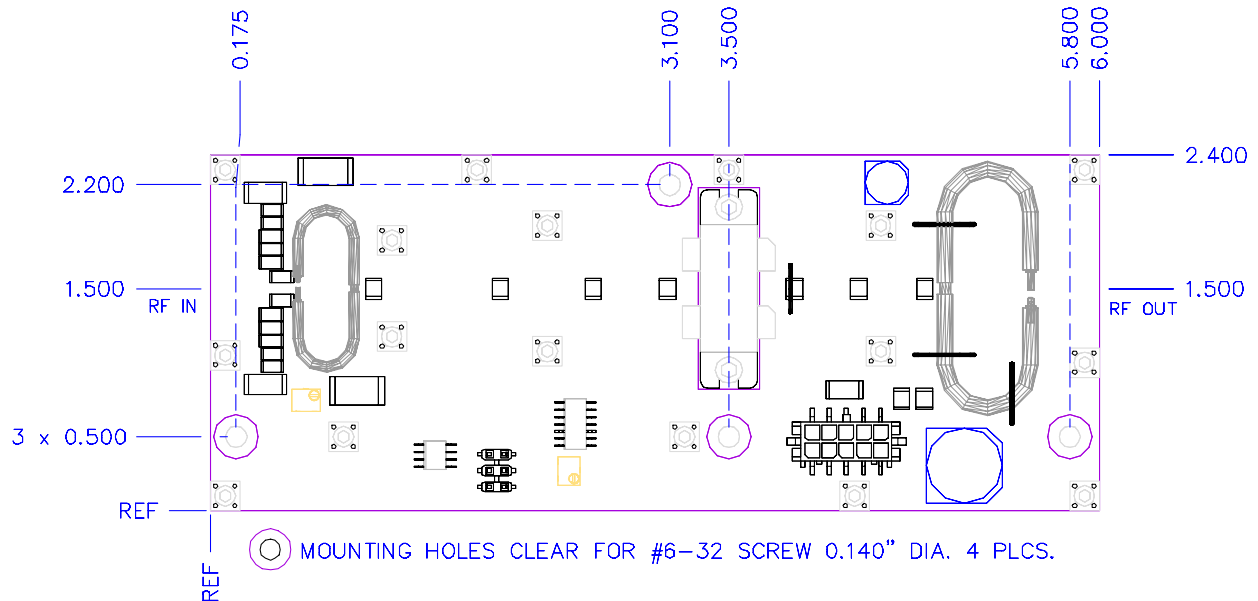




# P50-UHF-12

High Power RF Amplifiers and Accessories

100W UHF 470 - 860 MHz TV Linear Pallet Amplifier



## Tips for Mechanical Mounting:

- 1 All holes are clear for #6 Screw. Stainless Steel mounting hardware is recommended, grade 18-8 or better. A lock washer of same material should also be used.
- 2 Ensure mounting surface is flat to better than 0.003" / "
- 3 Use a thin layer of thermal compound on the backside of the PA - no more than 0.001" - 0.002" thickness!
- 4 Torque all screws to 10-12 in-lbs

## Considerations for Mechanical Mounting:

- Considerations for proper thermal design include
- Total power dissipated = Total DC Power Consumed x (1-Efficiency)
- Ambient Airflow
- Thermal Resistance of Heat Sink

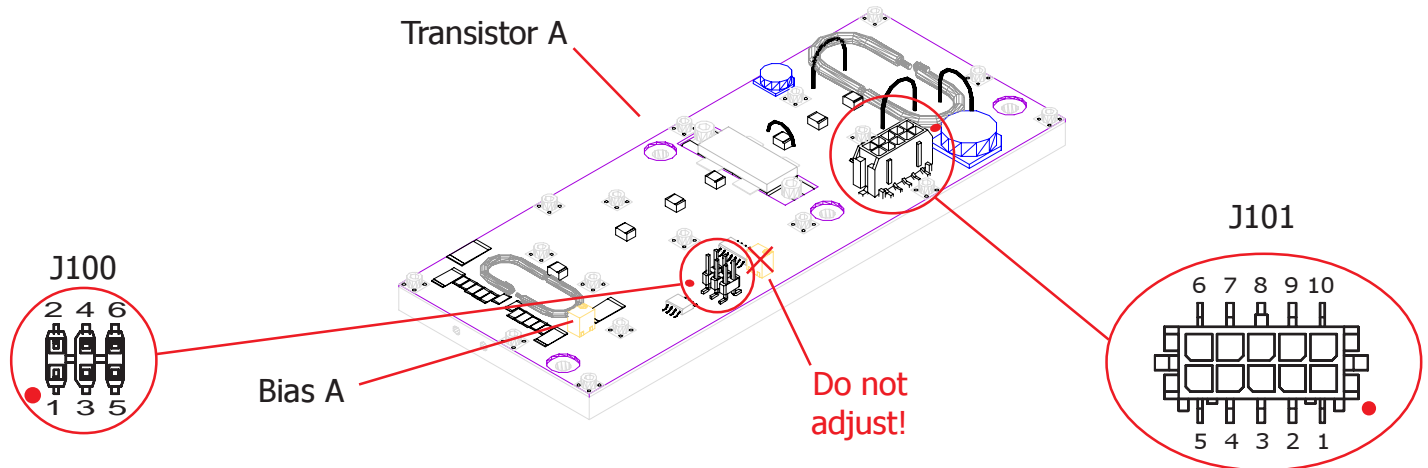


# P50-UHF-12

High Power RF Amplifiers and Accessories

100W UHF 470 - 860 MHz TV Linear Pallet Amplifier

## Electrical Connections:



<b>I/O</b> Standard 0.100" pitch DIP (DIP) header: SAMTEC type DSD, HCSD 3M type 89106-0101 AMP 102393-1, 102398-1 BERG 71602-306 -or- Solder directly to Pin in I/O connector	J100-1	ALARM_OUT	TTL Hi when baseplate exceeds 70C
	J100-2	ALARM_IN	Jumper to J1-1 for automatic shutdown at 70C, automatically re-enables at 60C
	J100-3	GROUND	
	J100-4	BIAS_SUP	Not used for this amplifier. Vsup internally connected here.
	J100-5	TEMP	Baseplate Temperature
	J100-6	DISABLE	TTL Hi to Disable amplifier
<b>Power</b> 3.0mm Micro Connector: MOLEX 43025-1000 MOLEX Pin 43030-0001, 43030-0007 AMP 1-794617-0 AMP Pin 794610, 794606 -or- Solder directly to pad adjacent to connector	J101-1,10	CURRENT	Current Sense, Transistor Q1, Q4
	J101-2,3,8,9	GROUND	System Ground
	J101-4,5,6,7	Vsup	+28 to +32 VDC

### Connections:

Connect amplifier to +Vsup and Ground using either 3.0mm modular 10-position plug (J101) or soldering directly to pads adjacent to connector. If using Single connection, 14 gauge wire is recommended. 20 gauge wire is recommended for use in modular connector, and all power connections must be used! In all cases, use of teflon insulated wire is highly recommended.

I/O connector (J100) connections are optional.

Connect coaxial cable to input and output RF connections (semi rigid or flexible) using best RF practices. Ensure output cable is of sufficient power handling rating. Pads are provided for ground on co-axial connections.

### Amplifier Startup

+Vsup should be applied to amplifier with no drive and with no bias applied. The system must allow drain voltage to reach +28V minimum before applying bias and drive or damage will result to the amplifier and void warranty. This typically takes between 2 - 10 seconds and should be verified by the system integrator. This can be accomplished in several ways:

- 1) Remove R107 which removes jumper between drain power and bias control circuit. Bias and control circuitry receives power through J100-4. Apply power to amp at J101, and remove power from J100-4. After proper voltage has been reached, apply voltage to J100-4 as described above. Amplifier is ready for use.
- 2) Apply power to amp at J101. Place a TTL Hi (+5V) to J100-6 DISABLE. After proper voltage has been reached, remove TTL Hi from J100-6 DISABLE. Amplifier is ready for use.

### Bias Current:

Bias current is controlled via temperature compensated bias system that uses a hermetically sealed glass thermistor as reference. If excessive air is directed above the amplifier such that the thermistor is cooled below the temperature of the baseplate, this circuitry may not perform properly. Bias has been pre-set at the factory to 1.0A at +32.0V DC. This bias point has been selected to offer the optimum balance between IMD performance, efficiency, and gain. If the bias point is changed, take great care not to exceed the bias listed on page 1.

### Fault Condition - Bad VSWR

Current sense J101-1, J101-10 should be monitored for excessive current. The voltage difference between J100-10,1 (transistor A) to J100-4,5,6,7 is scaled 1A per 0.010 V. If transistor experiences currents in excess of normal operation, a fault condition exists, and the amplifier should be disabled through J100-6 DISABLE. If current on transistor drops to below 0.5A indicated, a fault condition exists, and the amplifier should be disabled through J100-6 DISABLE.

### Temperature Sense and Temperature Fault

An on board temperature controller reports temperature on pin J100-5 TEMP. This is scaled to  $+395\text{mV} + (\text{Temperature } ^\circ\text{C} \times +6.20\text{mV}/^\circ\text{C})$  and has an output impedance of 1.5kohm typical. An output alarm, J100-1 ALARM OUT, is TTL Low when the temperature exceeds approximately 70°C, and the alarm is cleared when the baseplate temperature drops below approximately 60°C. For automatic operation, jumper J100-1 ALARM OUT to J100-2 ALARM IN and the amplifier will automatically disable by removing bias when the temperature exceeds 70°C, and automatically re-enable when the temperature drops below 60°C.

### Amplifier Shutdown

To prevent damage to amplifier and surrounding systems, bias and drive should be removed prior to powering down PA. This can be accomplished by removing voltage from J100-4 with R107 removed, or by applying TTL Hi (+5V) to J100-6 DISABLE. Power can safely be removed from PA.

### Miscellaneous:

Placing noisy analog or digital systems, such as additional control circuitry, directly over the top of transistors or RF path can cause improper operation. Care should be taken to locate these components where they will not cause interference.